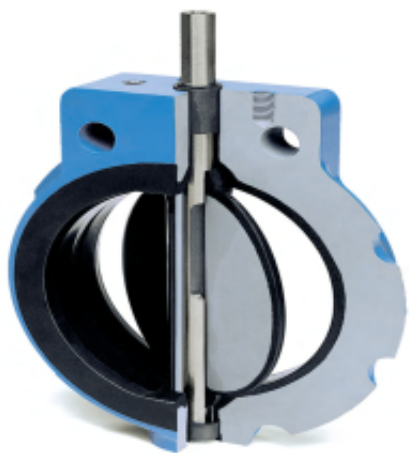


Mosite C10N

Brand: Media Valve



Short Description

The Mosites C10 Butterfly Valve, which is fully elastomer lined, is in use throughout the world in a wide range of critical service applications. The control of water, chemicals, air, slurries, and vapors to 150 psi bubble-tight shut off can be achieved with the Mosites Butterfly Valve. The C10N incorporates the same unique features as the C10 and meets API 609 and MSS-SP 67 laying length (face-to-face) dimensions for quick placement of standard butterfly valves

Description

MOSITES C10N VALVE 14" - 36" EXCEPT 30" 14" - 24" 150 PSI SERVICE 36" 125 PSI SERVICE The quarter turn operation of the disc is easily accomplished by the handlever (with friction lock positioner) or weatherproof gear operator. For pneumatic or electric actuation packages, see page 11. The Mosites Butterfly Valve meets ANSI B16.104, Class VI, bi-directional shut-off specifications, and is for use with ANSI B 16.5 (2"-24") ANSI B16.47A (30"-36") dimensional 150# flanges. The valve can also be used for full vacuum and dead end service.