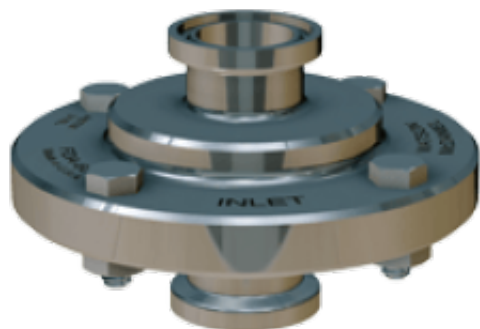


# Clean Steam & Sanitary Traps

**Brand:** Watson McDaniel



## Short Description

Sanitary Steam Traps are designed to offer free flow-through internal passages by incorporating very smooth internal finishes (20-25 Ra). For periodic passivation and sanitation of the system, these traps offer a tri-clamp connection on the body to allow for removal of the thermal element. Clean Steam Traps are steam traps designed for similar functionality as the sanitary traps, but do not offer the same level of surface finish.

## Description

Because different facilities may identify different areas of potential contamination in a piping system, various end connections are available to satisfy customer needs. Sanitary Tri-Clamp (TC) - A quick disconnect type fitting that meets sanitary piping standards allowing piping systems or products to be easily dismantled. Tube Weld (TW) – a connection offered where welding of the steam trap is preferred for sanitary applications NPT (NP) – a standard national pipe thread taper connection offered for applications with less stringent requirements, often considered on main line drip applications.

Manufacturing and Design Standards ASME BPE – Provides requirements of equipment used in bioprocessing, pharmaceutical and other applications that require high hygienic levels. USP 24 – Standard for Pharmaceutical Grade Water which specifies the chemical composition of the allowable number of contaminants. FDA CFR Title 21-177.1550 – Standard for perfluorocarbon resins that may be safely used as components intended to contact food. 3A Sanitary Standards – Standards provide material specifications, design criteria and other necessary information for equipment types to satisfy public health concerns where a high degree of sanitation is required.