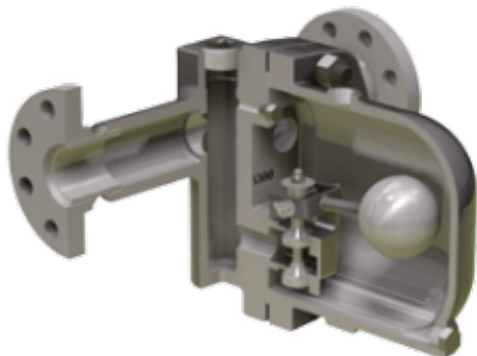


# Float Type Liquid Drainers

**Brand:** Watson McDaniel



## Short Description

Typically used in process applications for draining condensate from air for other gases. If a Float Type Liquid Drainer is selected, typically it is necessary to add a Balancing (or Equalizing) Line to allow any air or gases trapped in the drainer to escape. If the Balancing Line is not installed, these gases can prevent proper operation by air-binding the trap.