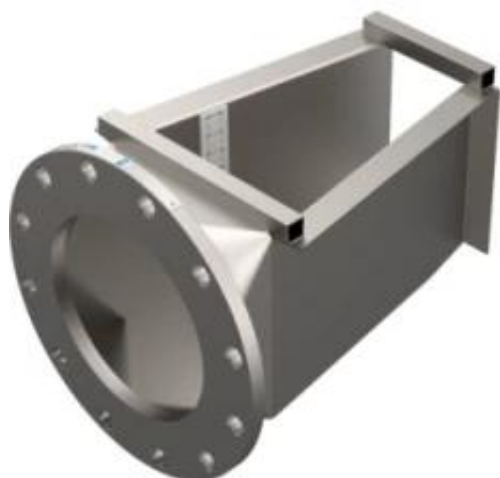


PFS Halmi Nozzle (HN)



Brand: Primary Flow Signal

Short Description

2.00% Uncalibrated Uncertainty Low Cost, Open Channel Application Line size: 6 to 48 inches Head loss: Low Service life: 25 years plus depending on materials The Halmi Nozzle is an open channel device and was developed for free discharge into tanks or lagoons and pipe to pipe applications in a manhole, for instance. The Halmi Nozzle solution is ideal for open channel custody transfer or billing applications and utilizes a wide range of secondary instrumentation to provide an ideal solution to an open channel requirement.

Description

The Halmi Nozzle is an open channel device and was developed for free discharge into tanks or lagoons. It's ideally used for open channel sewage or sludge. Basic accuracy of +/-2.0%. Calibrated accuracy of +/-1.0%. Lower head loss compared to other free discharge devices.